



## Welcome to the European Space Week

### Where?

#### Le Palais du Pharo

Commissioned in 1852 by Napoleon III for the Empress Eugénie and fully restored in 2013, the Palais du Pharo in Marseille is the official venue of European Space Week 2018.

The Palais is situated at the entrance to the Vieux-Port, [58 Boulevard Charles Livon, 13007 Marseille, France](https://www.marseille.fr/en/visiting-marseille/visiting-marseille-2018)



### Where and when to get your badge?

Online registration to the event will close on the 27<sup>th</sup> November 2018.

After that, you will receive a bar code by email please bring it with you (printed or on your phone).

Please go with the bar code to the reception desk to get your printed badge. (Please refer to the 'Access' section to see where is the entrance on each day).



hosted by



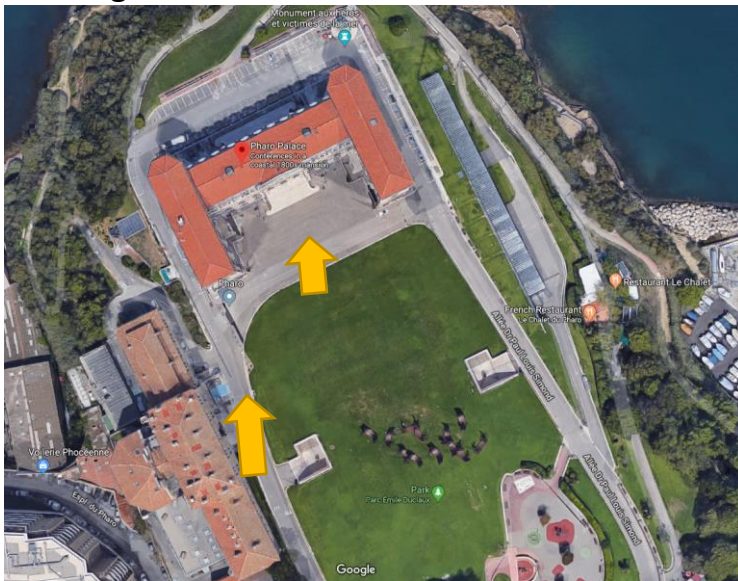
organised by





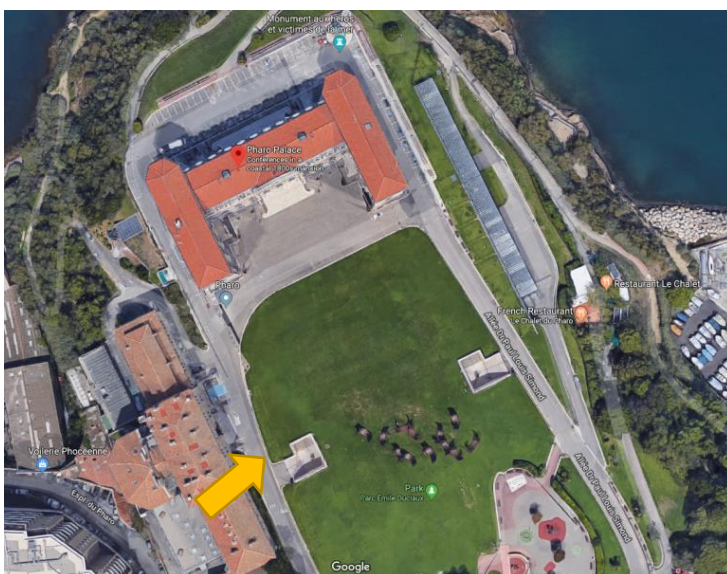
*Access on Monday all day and Tuesday morning:*

Please go to the main entrance of the old building



*Access on Tuesday afternoon until the end of the event:*

Please go to the West Hall, stairs underground will lead you to the event.



hosted by



organised by





## Transport:

### Taxis:

Taxis, Officiel de l'aéroport de Marseille :	<b>Mobile phone</b> : +33 6 25 23 13 19 <b>Station</b> : +33 4 42 14 24 44 <b>Office</b> : +33 4 42 88 11 44 <a href="http://www.taxis-aeroport.com">http://www.taxis-aeroport.com</a> <a href="mailto:taxis@taxis-aeroport.com">taxis@taxis-aeroport.com</a>
Cab Taxi :	<b>Tel.:</b> +33674198618 <b>SMS:</b> +33674198618 <b>What's App:</b> 06 74 19 86 18 <a href="http://www.cabtaxis.fr">www.cabtaxis.fr</a> <a href="mailto:contact@cabtaxis.fr">contact@cabtaxis.fr</a>
Les Taxis Marseillais :	<b>Tel.:</b> 0033 4 91 92 92 92
Taxis Radio Marseille :	<b>Tel.:</b> 0033 4 91 02 20 20

### Public Transport:

From Marseille Provence Airport to Palais Pharo	Take <b>OUI Bus n.XRF</b> in direction of 'Gare Routière Saint-Charles'  In Gare Routière Saint-Charles: Take <b>Bus 82S</b> direction Pharo Catalans  Arrive in Le Pharo (350m)
---	--



## Hotels:

*****	<b>Sofitel Marseille Vieux Port</b> 100m du Palais du Pharo <a href="http://www.sofitel-marseille-vieuxport.com">www.sofitel-marseille-vieuxport.com</a>	0033 4 91 15 59 00
	<b>Intercontinental Marseille - Hotel Dieu</b> 1.500m du Palais du Pharo <a href="http://intercontinental.com/marseille">http://intercontinental.com/marseille</a>	0033 4 91 01 39 74
	<b>Novotel Marseille Vieux Port</b> 100m du Palais du Pharo <a href="http://www.novotel.com">www.novotel.com</a>	0033 4 96 11 42 11
	<b>Radisson Blu Hotel Marseille Vieux Port</b> 700m du Palais du Pharo <a href="http://www.radissonblu.com/hotel-marseille">www.radissonblu.com/hotel-marseille</a>	0033 4 88 92 19 50
	<b>La Résidence du Vieux Port</b> 1.000m du Palais du Pharo <a href="http://www.hotelmarseille.com">www.hotelmarseille.com</a>	0033 4 91 91 91 22
	<b>Grand Tonic Hotel Vieux Port</b> 1.000m du Palais du Pharo <a href="http://www.tonichotel.com">www.tonichotel.com</a>	0033 4 91 55 67 46
	<b>Grand Hotel Beauvau</b> 1.000m du Palais du Pharo <a href="http://www.grandhotelbeauvaumarseille.com">www.grandhotelbeauvaumarseille.com</a>	0033 4 91 54 91 00
	<b>Mercure Marseille Centre</b> 1.200m du Palais du Pharo <a href="https://www.accorhotels.com/fr/hotel-1148-hotel-mercure-marseille-centre-vieux-port/index.shtml">https://www.accorhotels.com/fr/hotel-1148-hotel-mercure-marseille-centre-vieux-port/index.shtml</a>	0033 4 96 17 22 22