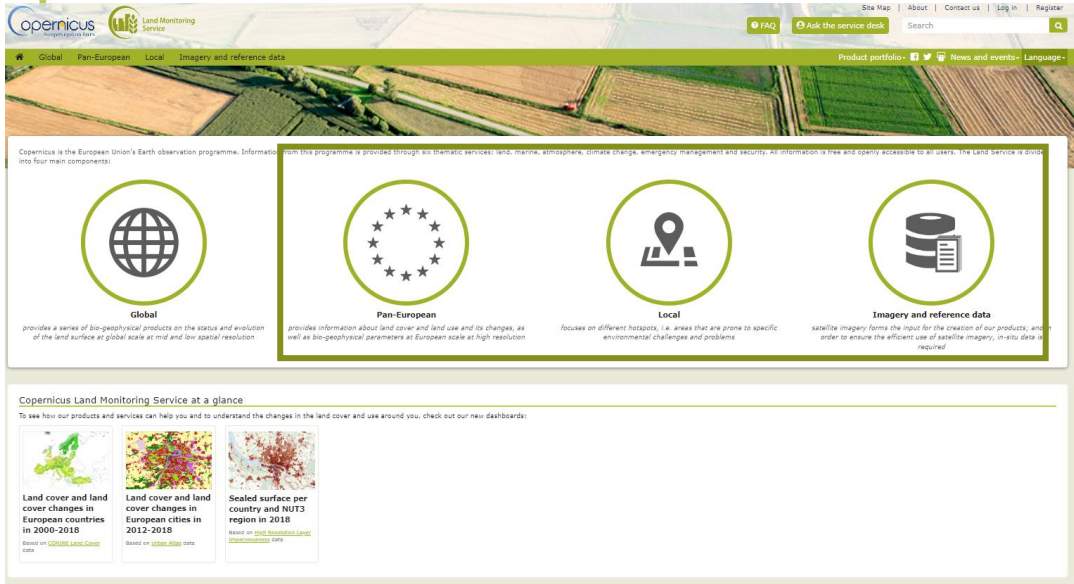




Land Monitoring

Copernicus Land Monitoring Service

Provides **geographical information on land cover and its changes, land use, vegetation state, water cycle and Earth's surface energy variables** to a broad range of users in Europe and across the World in the field of environmental terrestrial applications



Local

Priority Area Monitoring



Pan-European

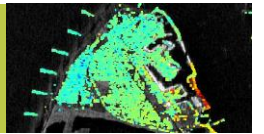
Biophysical parameters



Land Cover and Land Use



European Ground Motion Service



Imagery and reference data

Mosaics, in-situ and reference data



<https://land.copernicus.eu/>

Usue Donezar Usue.Donezar@eea.europa.eu

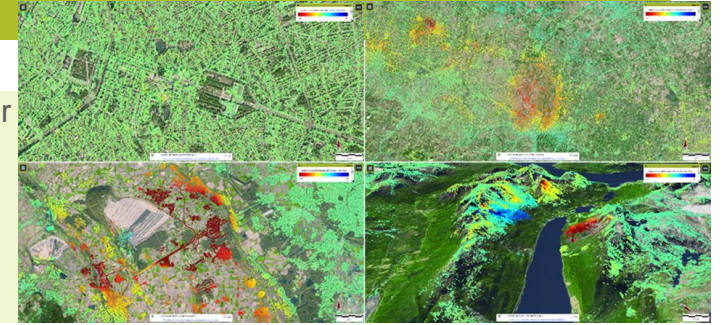


Land
Monitoring

EU Space UCP – Infrastructures

EGMS

- Natural and anthropogenic ground motion, with millimeter accuracy;
- Starting point for investigation of ground motion affecting buildings and linear infrastructures;
- Download available by mid-October 2022;
- Yearly update of basic, calibrated and ortho products.



Urban
Atlas

- Land use data in urban areas > 50.000 habitants;
- Updates every 6 years since 2006, 3 from 2021;
- 17 urban classes, MMU 0,25ha (urban)/ 1ha (rural);
- Includes Street Tree Layers, Building Heights data and population density for 2018.

Snow
and Ice

- Snow cover properties on land, and ice occurrences within the hydrographic network from September 2016 onwards;
- NRT products and monthly/annual aggregates.

CLC

- Longest running Land Use and Land Cover data;
- Updated every 6 years from 2000 onwards;
- Gives information on land use and land cover and change data;
- MMU 25ha for status product, 5ha for change products.