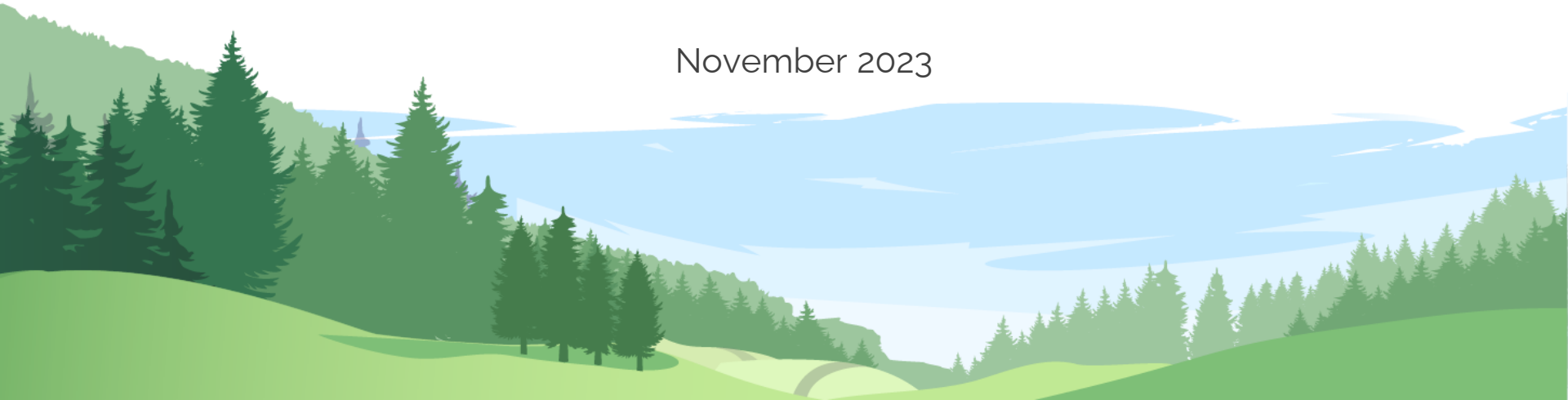


CollectiveCrunch @ EU Space Week

November 2023

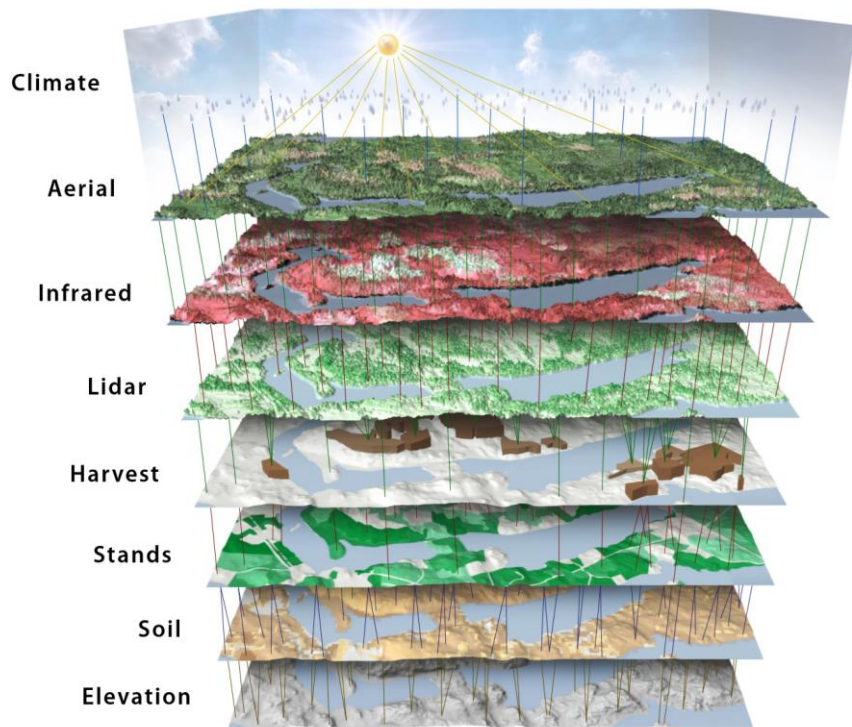


Team of 20, 23million ha covered



- AI-based forestry analytics as a SaaS model
- Finnish-German firm established in 2016
- Serving 8 of the Nordic/Baltic Top10
- 80 person-years of technical product development

We change the world understanding of forests

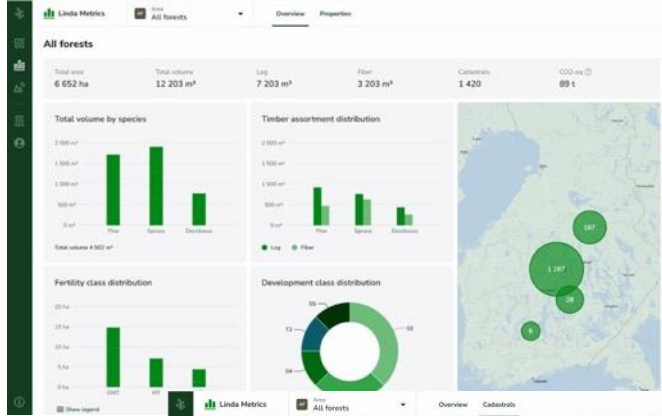


B2B SaaS-based, data-driven forestry services

Value to customer

- Spend less on better forest inventories
- Only cut the trees you need to cut
- Know and track the assets you own

Use Case 1 – Forest inventories

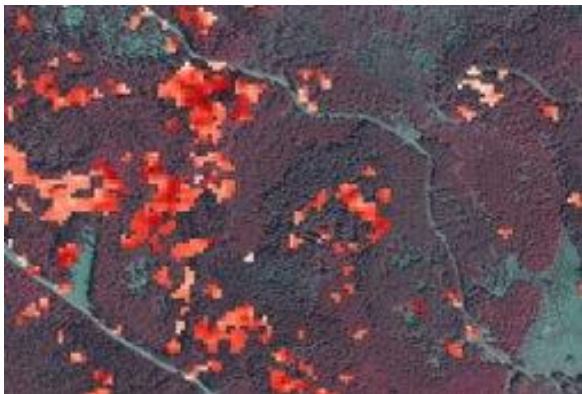


- Platform for **accurate, scalable** and **timely analytics** of forest inventories
- Prediction of wood mass, species, **stem distribution**
- **Decreased inventory costs, increased yields**

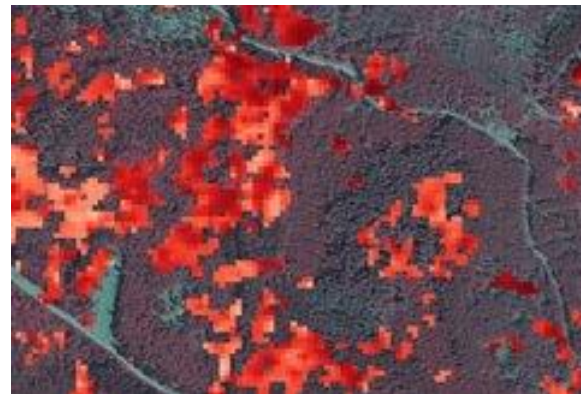
Use Case 2 – bark beetle monitoring, prediction



June 2021



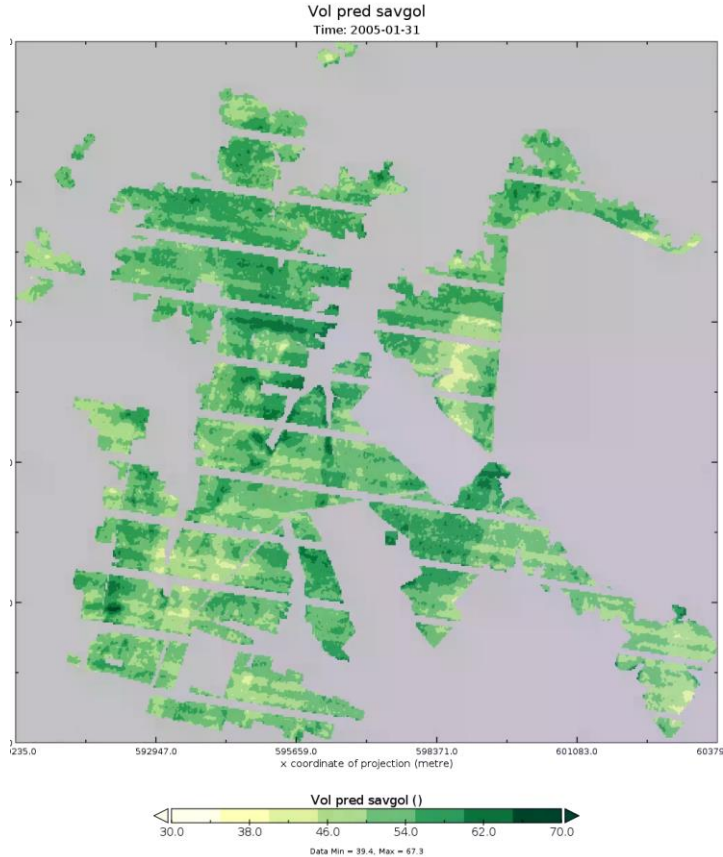
October 2021



October 2022

- Detection on bark beetle outbreak based on multi-layered time series
- Enables quick response to mitigate forest damage
- Minimizing loss of value

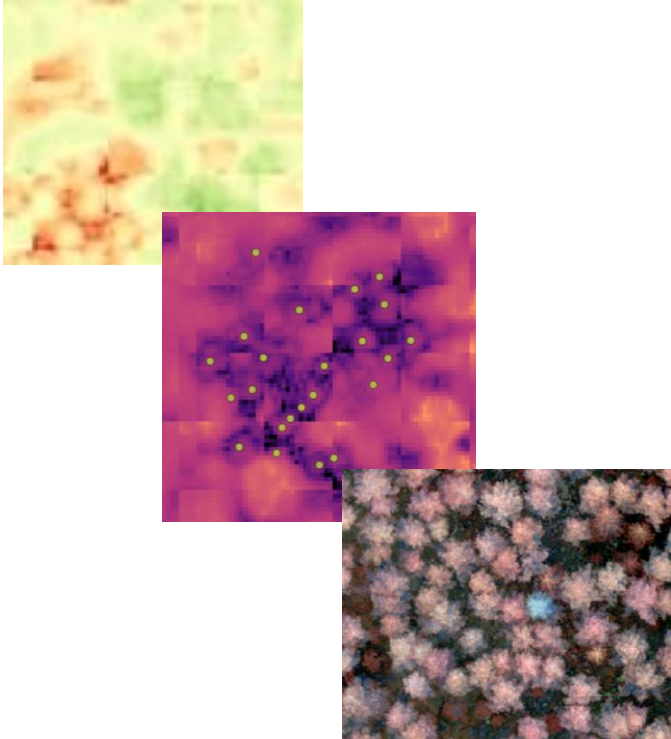
Use Case 3 – Carbon analytics



- Carbon stocks based on remote sensing data, calibrated with ground truth
- Verifiable accuracy
- Can and should replace manual processes currently in place that will not scale
- Growth predictions based on PG3

Case 4 – Large-scale tracking of biodiversity

From large scale to tree level analytics



- Forest biodiversity indicators and monitoring changes in forest biodiversity
- Dead trees, tree species distribution, forest structure, retention trees
- Biodiversity index of sensitive areas

Challenges

Tech / standard

- Lack of transparency in carbon projects
- Lack of digital MRV adoption in standards
- Carbon (narrow) vs biodiversity (broad)
- Technically this solvable, but requires innovation on top of standards

Business

- "Wall of money" not being spent due to concerns regarding greenwashing
- Alignment of mandatory and voluntary activity

Business landscape of the future



- Raw material and carbon are businesses today, move to biodiversity may leapfrog carbon problems
- Country-specific standards are springing up, leading to fragmentation
- New and better sensors drive data quality and modelling accuracy
- More frequent fly-overs can improve monitoring significantly

References



METSÄHALLITUS



storaenso



"Finally we have use for all data that we have been collecting"
– Anders Järlesjö, Sveaskog



Contact



Rolf Schmitz

Co-Founder

rs@collectivecrunch.com

LinkedIn

