

#EUSpace 

EU SPACE WEEK 2023

7 - 9 November - Sevilla, Spain

Copernicus for forestry - products

UCP: Agriculture and Forestry

Usue Donezar Hoyos, European Environment Agency



Copernicus Land Monitoring Service

- Geographical information on **land cover and its changes, land use, vegetation state, water cycle** and Earth's **surface energy variables** on European and global levels for environmental applications
- **Harmonized** and **consistent** in time and space
- Products and manuals are free and open
- Implemented by JRC and EEA
- Website: <https://land.copernicus.eu/>

Land cover and land use mapping

Priority area monitoring

Bio-geophysical parameters

Ground motion monitoring

Satellite data

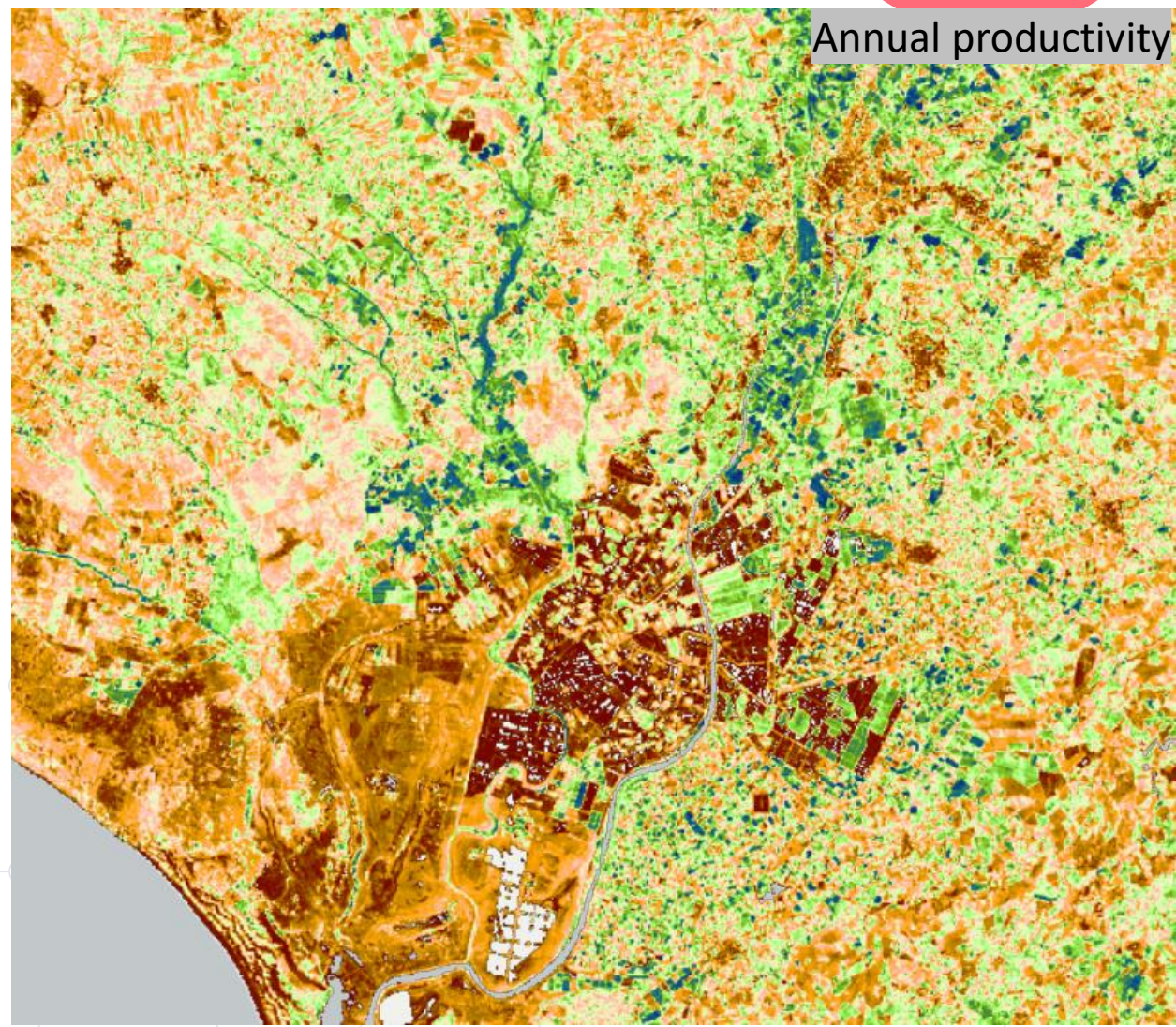
Reference and validation data

HR Vegetation Parameters

- Spatial resolution: 10 m, pixel based, no MMU
- Update frequency: Daily/10-daily/Yearly
- Most recent reference layer: 2022/2023
- Examples of applications:
 - Mapping peatlands and modelling their CO₂ emissions
 - Assessing and adapting to drought impact
 - Biodiversity conservation

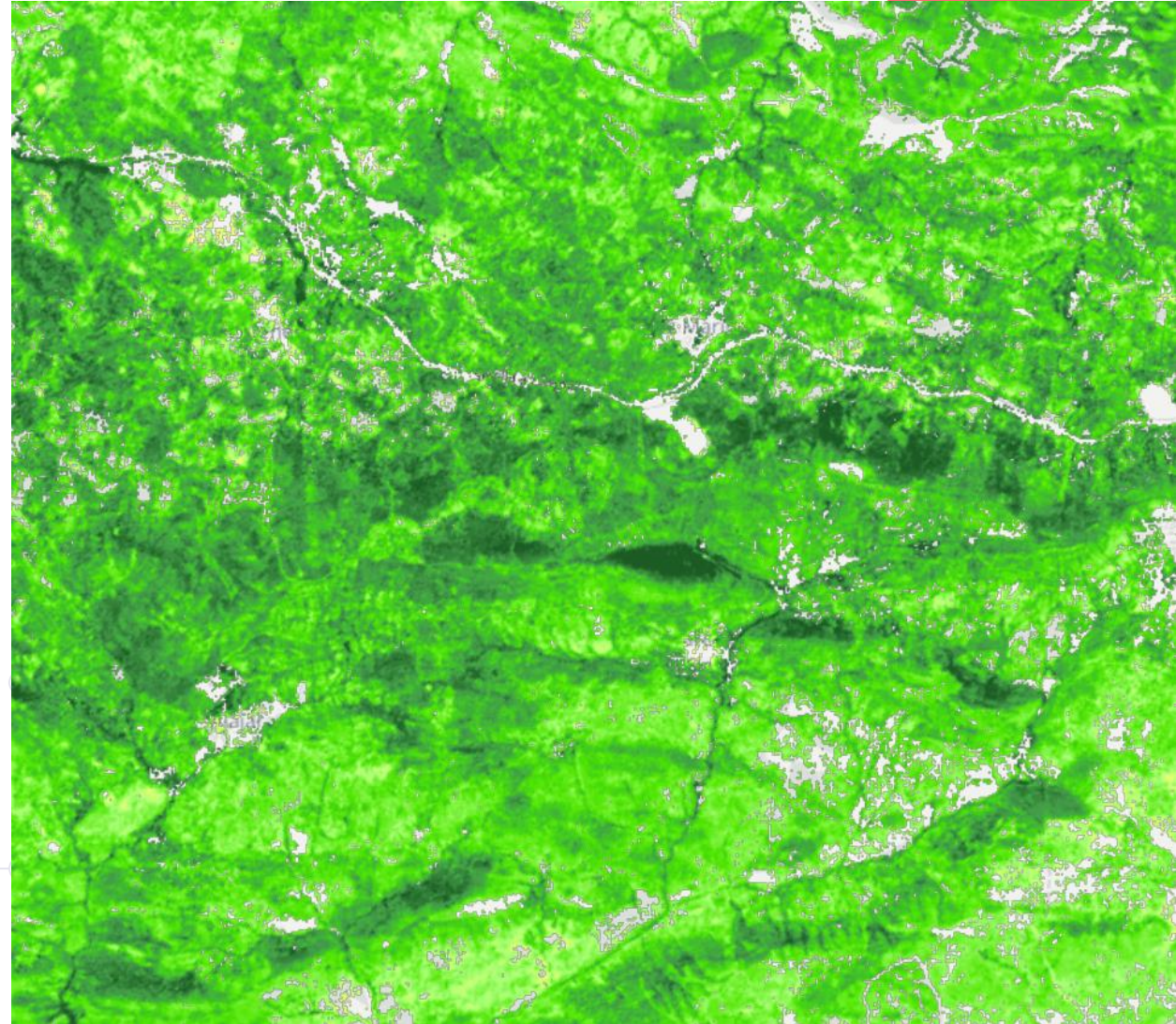
Upcoming webinar series:

<https://land.copernicus.eu/en/events/high-resolution-phenology-and-productivity-for-drought-impact-assessments>



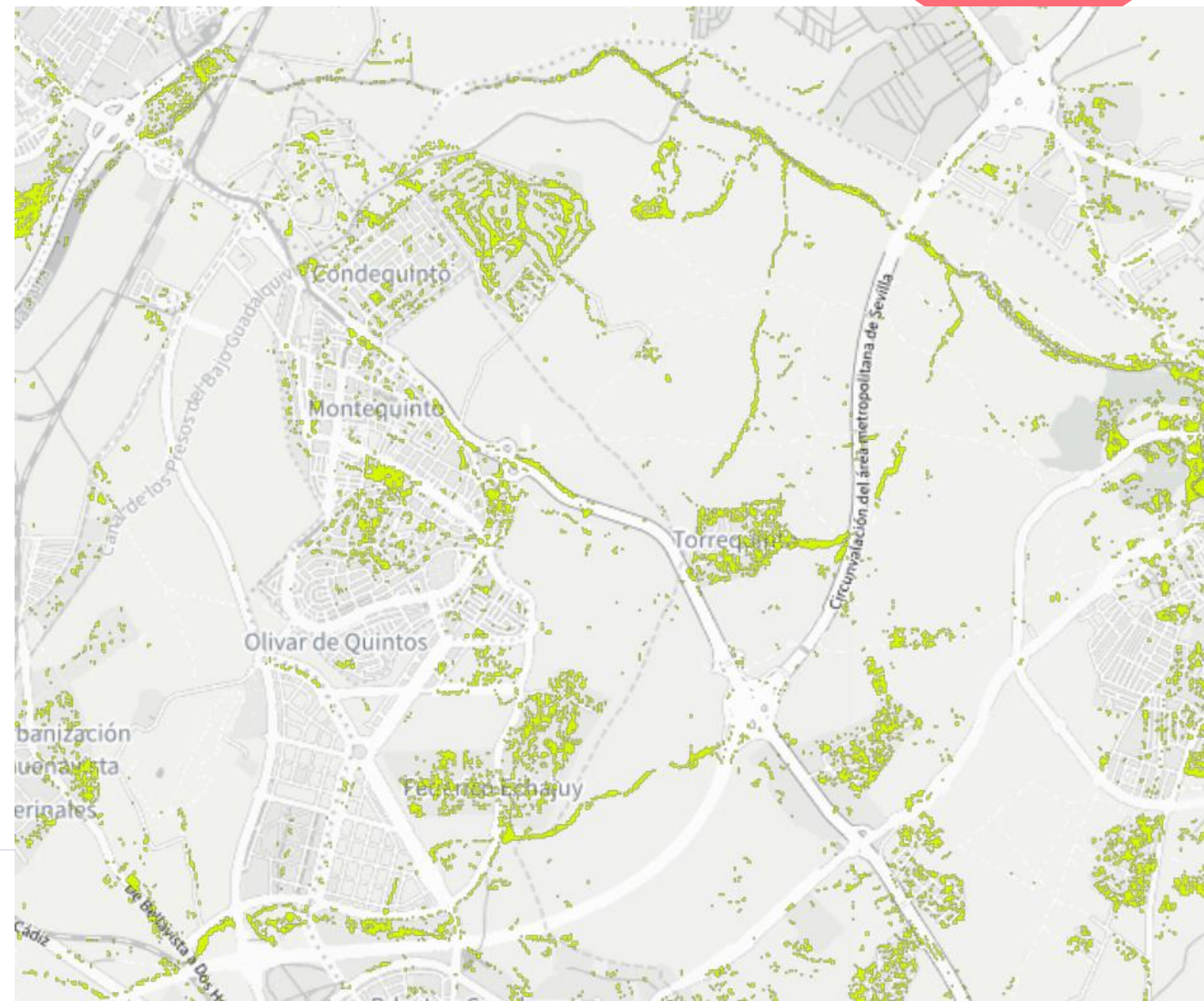
HRL Vegetated Land Cover Characteristics – HRL Forest

- Spatial resolution: 10m, pixel based, no MMU
- Update frequency: 3 years until 2018, yearly onwards
- Most recent reference layer: 2018
- Publication of new data in Q1 2024
- Examples of applications:
 - Monitoring of tree cover density
 - Basis for further developments on species classification



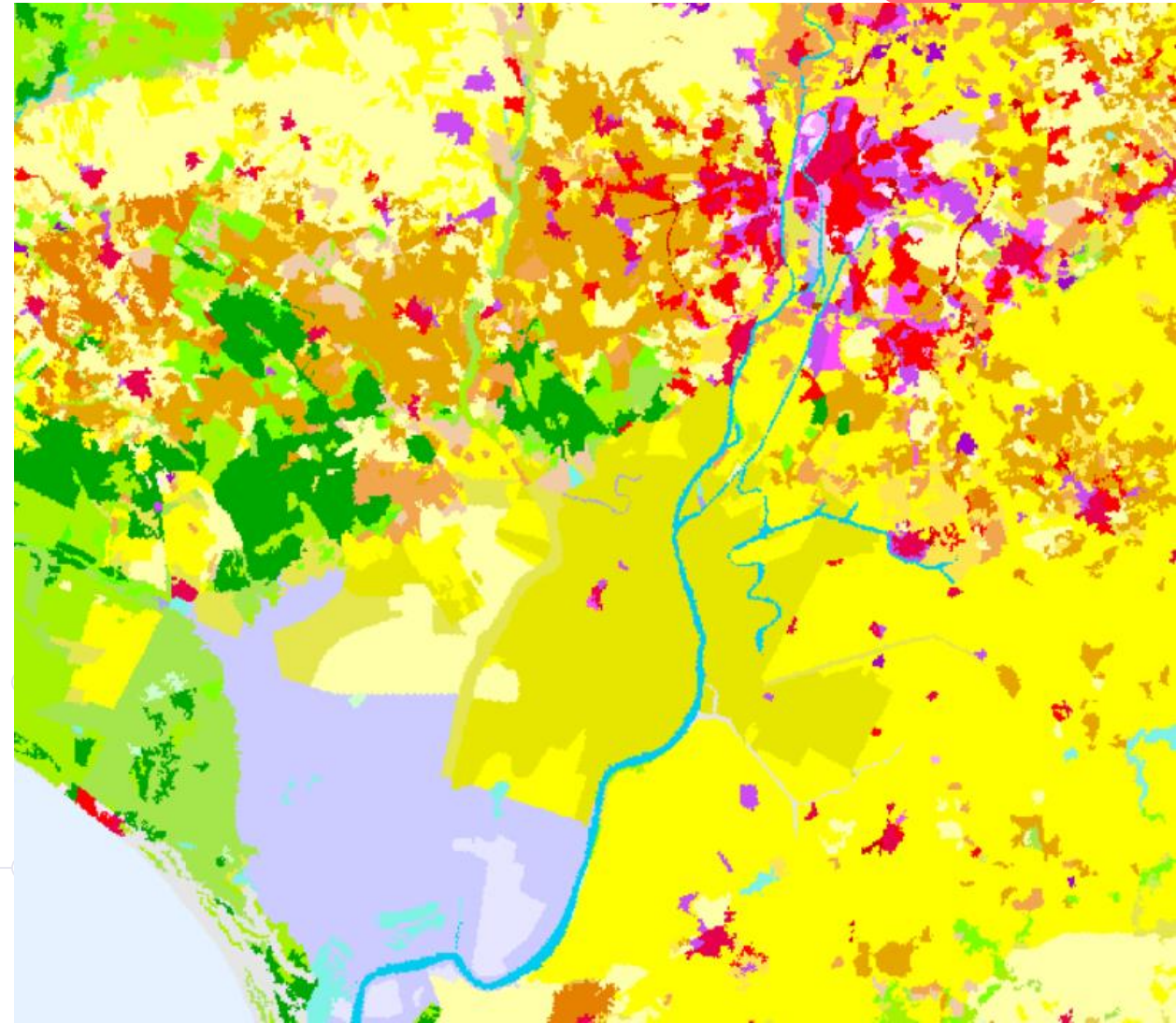
HRL Small Woody Features

- Spatial resolution: 5/100 m, vector layer
- Update frequency: 3 years
- Most recent reference layer: 2018
- Examples of applications:
 - CAP monitoring of Good Agro Ecological Conditions
 - Urban Greening



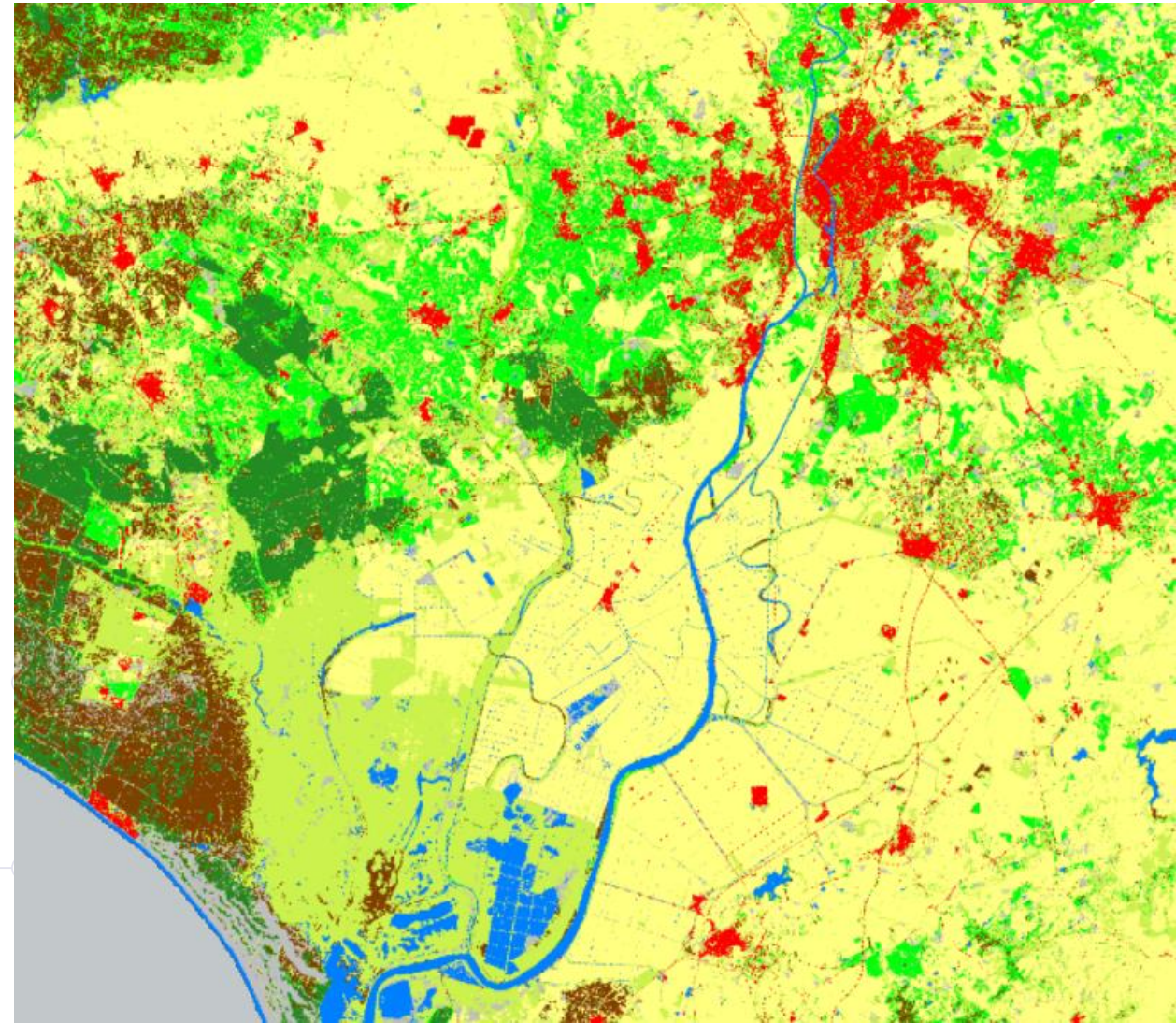
Corine Land Cover

- Spatial resolution: 25/5 ha MMU
- Update frequency: 6 years
- Most recent reference layer: 2018
- Examples of applications:
 - Habitat mapping
 - Impact assessment



Corine Land Cover+ Backbone

- Spatial resolution: 10 m, pixel based
- Update frequency: 3 (soon 2) years
- Most recent reference layer: 2018
- Examples of applications:
 - Land cover classification
 - Impact assessment




EU
SPACE
WEEK
2023

Thank you!

Usue.Donezar@eea.Europa.eu
<https://land.copernicus.eu/>

#EUSpace 



EU
SPACE
WEEK

2023

www.euspaceweek.eu | #EUSW

